



Online Data sheet

Encoder WDGI 58A

www.wachendorff-automation.com/wdgi58am

Wachendorff Automation

... systems and encoders

- Complete systems
- Industrial rugged encoders to suit your application
- Standard range and customer versions
- Maximum permissible loads
- 48-hour express production
- Made in Germany
- Worldwide distributor network

Encoder WDGI 58A



Illustration similar



- Robust construction for industrial use
- Protection to IP67, shaft sealed to IP65 (optional IP67 all round)
- High electrical immunity
- Further options

www.wachendorff-automation.com/wdgi58am

| Resolution | |
|---------------------------|-----------------------|
| Pulses per revolution PPR | 1 PPR up to 16384 PPR |

| Mechanical Data | |
|------------------|--|
| Flange | synchro flange |
| Flange material | aluminum |
| Housing material | Stainless steel or die cast aluminum, powder coated (only M16 and M23 plugs) |
| Flange diameter | Ø 58 mm [Ø 2.283"] |
| Cam mounting | pitch 69 mm [2.717 inches] (Accessory SP-3-00) |

| Shaft(s) | |
|-----------------|---|
| Shaft material | stainless steel |
| Starting torque | approx. 0.5 Ncm [0.708 in-ozf] at ambient temperature |

| | |
|---------------------------------------|--|
| Shaft | Ø 6 mm [Ø 0.236"] |
| Advice | Attention: No option AAO = full IP67 version |
| Shaft length | L: 12 mm [0.472"] |
| Max. Permissible shaft loading radial | 125 N [12.746 kp] |
| Max. Permissible shaft loading axial | 120 N [12.236 kp] |

| | |
|---------------------------------------|--|
| Shaft | Ø 8 mm [Ø 0.315"] |
| Advice | Attention: No option AAO = full IP67 version |
| Shaft length | L: 19 mm [0.748"] |
| Max. Permissible shaft loading radial | 125 N [12.746 kp] |
| Max. Permissible shaft loading axial | 120 N [12.236 kp] |

| | |
|---------------------------------------|--|
| Shaft | Ø 9.525 mm [Ø 3/8"] Order No: 4Z |
| Advice | Attention: No option AAO = full IP67 version |
| Shaft length | L: 20 mm [0.787"] |
| Max. Permissible shaft loading radial | 220 N [22.433 kp] |
| Max. Permissible shaft loading axial | 120 N [12.236 kp] |

| | |
|---------------------------------------|--------------------|
| Shaft | Ø 10 mm [Ø 0.394"] |
| Shaft length | L: 20 mm [0.787"] |
| Max. Permissible shaft loading radial | 220 N [22.433 kp] |
| Max. Permissible shaft loading axial | 120 N [12.236 kp] |

| Bearings | |
|-----------------------|--|
| Bearings type | 2 precision ball bearings |
| Nominale service life | 3 x 10 ⁸ revs. at 100 % rated shaft load 5 x 10 ⁹ revs. at 40 % rated shaft load 4 x 10 ¹⁰ revs. at 20 % rated shaft load |
| Max. operating speed | 10000 rpm |

| Machinery Directive: basic data safety integrity level | |
|--|---|
| MTTF _d | 2200 a |
| Mission time (TM) | 25 a |
| Nominale service life (L10h) | 4 x 10 ¹⁰ revs. at 20 % rated shaft load and 10000 rpm |
| Diagnostic coverage (DC) | 0 % |

| Electrical Data | |
|----------------------------------|--|
| Power supply/Current consumption | 4.75 VDC up to 30 VDC: typ. 40 mA |
| Operating principle | magnetic |
| Output circuit | HTL (TTL at 5 VDC) HTL, inv. (TTL/RS422 comp. at 5 VDC) |
| Pulse frequency | HTL up to 16384 ppr: max. 600 kHz TTL up to 16384 ppr: max. 1 MHz |
| Channels | ABN and inverted signals |
| Load | max. 40 mA / channel |
| Circuit protection | yes |

| Accuracy | |
|--------------------|---|
| Phase offset | 90° ± max. 7.5 % of the period duration |
| pulse-/pause-ratio | 50 % ± max. 7 % |

| Environmental data | |
|-------------------------------|---|
| ESD (DIN EN 61000-4-2): | 8 kV |
| Burst (DIN EN 61000-4-4): | 2 kV |
| includes EMC: | DIN EN 61000-6-2 DIN EN 61000-6-3 |
| Vibration: (DIN EN 60068-2-6) | 50 m/s ² (10 Hz up to 2000 Hz) |
| Shock: (DIN EN 60068-2-27) | 1000 m/s ² (6 ms) |
| Electrical Safety: | according DIN VDE 0160 |

Duty information

Customs tariff number: 90318020

Country of origin: Germany

General Data

Weight approx. 230 g [8.113 oz]

Connections cable or connector outlet

Protection rating (EN 60529) Housing: IP65, IP67;
shaft sealed: IP65;
cable outlet K1: IP40Operating temperature Connector: -40 °C up to +85 °C,
Cable: -20 °C up to +80 °C (Option
ACA: -40 °C up to +85 °C).
Connector: -40 °F up to +185 °F,
Cable: -4 °F up to +176 °F, Option
ACA: -40 °F up to +185 °FStorage temperature Connector: -40 °C up to +85 °C,
Cable: -30 °C up to +80 °C (Option
ACA: -40 °C up to +85 °C)
Connector: -40 °F up to +185 °F,
cable: -22 °F up to +176 °F, (Option
ACA: -40 °F up to +185 °F)**More Information**

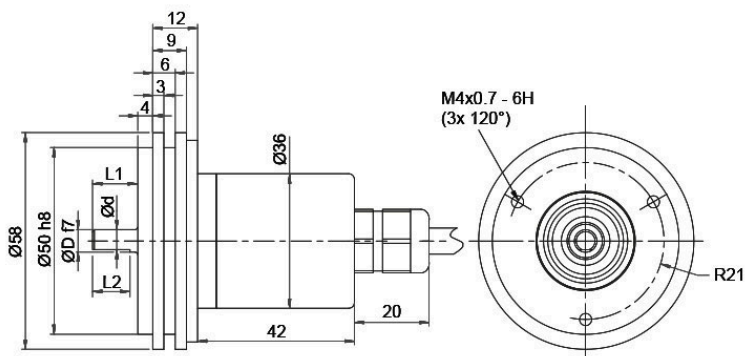
General technical data and safety instructions

<http://www.wachendorff-automation.com/gtd>

Options

<http://www.wachendorff-automation.com/acc>

Cable connection L2, axial, with 2 m cable



D = 6, L1 = 12, d = 5.3, L2 = 10
 D = 8, L1 = 19, d = 7.5, L2 = 15
 D = 10, L1 = 20, d = 9, L2 = 15
 D = 3/8", L1 = 20, d = 8.3, L2 = 10

Option AIX:
 D = 6, L1 = 10, d = 5.3, L2 = 8

Alle Abmessungen in mm / All dimensions in mm

Description

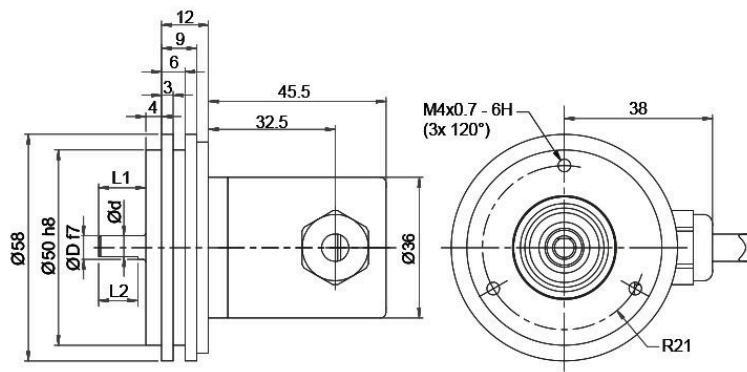
ABN inv. poss.

L2 axial, shield connected to encoder housing

•

| Assignments | | |
|----------------|-----------|-----------------|
| | L2 | L2 |
| Circuit | N35 | M35 |
| GND | WH | WH |
| (+) Vcc | BN | BN |
| A | GN | GN |
| B | YE | YE |
| N | GY | GY |
| - | - | - |
| A inv. | - | RD |
| B inv. | - | BK, (BU at ACA) |
| N inv. | - | VT |
| Shield | flex | flex |

Cable connection L3, radial, with 2 m cable



D = 6, L1 = 12, d = 5.3, L2 = 10
 D = 8, L1 = 19, d = 7.5, L2 = 15
 D = 10, L1 = 20, d = 9, L2 = 15
 D = 3/8", L1 = 20, d = 8.3, L2 = 10

Option AIX:

D = 6, L1 = 10, d = 5.3, L2 = 8

Alle Abmessungen in mm / All dimensions in mm

Description

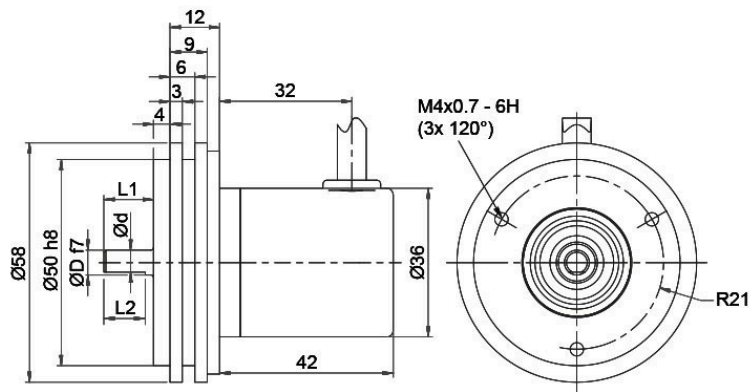
ABN inv. poss.

L3 radial, shield connected to encoder housing

•

| Assignments | | |
|----------------|------|-----------------|
| | L3 | L3 |
| Circuit | N35 | M35 |
| GND | WH | WH |
| (+) Vcc | BN | BN |
| A | GN | GN |
| B | YE | YE |
| N | GY | GY |
| - | - | - |
| A inv. | - | RD |
| B inv. | - | BK, (BU at ACA) |
| N inv. | - | VT |
| Shield | flex | flex |

Cable K1 (IP40) radial with 2 m cable



D = 6, L1 = 12, d = 5.3, L2 = 10
 D = 8, L1 = 19, d = 7.5, L2 = 15
 D = 10, L1 = 20, d = 9, L2 = 15
 D = 3/8", L1 = 20, d = 8.3, L2 = 10

Option AIX:

D = 6, L1 = 10, d = 5.3, L2 = 8

Alle Abmessungen in mm / All dimensions in mm

Description

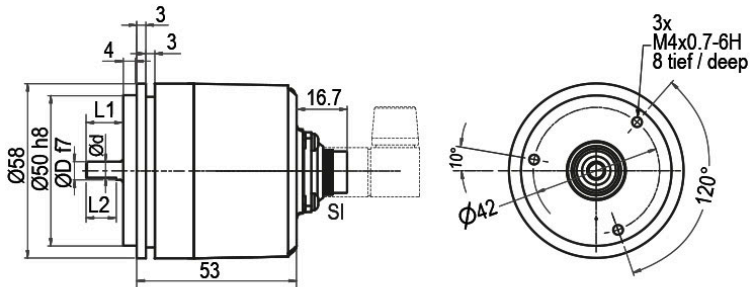
ABN inv. poss.

K1 radial, shield not connected (IP40)

•

| Assignments | | |
|----------------|------|------|
| | K1 | K1 |
| Circuit | N35 | M35 |
| GND | WH | WH |
| (+) Vcc | BN | BN |
| A | GN | GN |
| B | YE | YE |
| N | GY | GY |
| - | - | - |
| A inv. | - | RD |
| B inv. | - | BK |
| N inv. | - | VT |
| Shield | flex | flex |

Connector (M16x0.75) SI, axial, 5-, 6-, 8-, 12-pin



D = 6, L1 = 12, d = 5.3, L2 = 10
 D = 8, L1 = 19, d = 7.5, L2 = 15
 D = 10, L1 = 20, d = 9, L2 = 15
 D = 3/8", L1 = 20, d = 8.3, L2 = 10

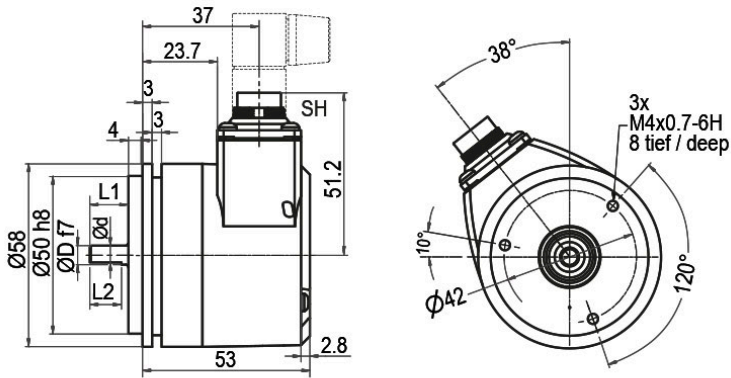
Option AIX:

D = 6, L1 = 10, d = 5.3, L2 = 8

| Description | ABN inv. poss. |
|---|----------------|
| SI5 axial, 5-pin, Connector connected to encoder housing | - |
| SI6 axial, 6-pin, Connector connected to encoder housing | - |
| SI8 axial, 8-pin, Connector connected to encoder housing | • |
| SI12 axial, 12-pin, Connector connected to encoder housing | • |

| Assignments | | | | | | |
|----------------|-------|-------|---------|-------|---------------|--------|
| | SI5 | SI6 | SI8 | SI8 | SI12 | SI12 |
| | 5-pin | 6-pin | 8-pin | 8-pin | 12-pin | 12-pin |
| | | | | | | |
| Circuit | N35 | N35 | N35 | M35 | N35 | M35 |
| GND | 1 | 6 | 1 | 1 | K, L | K, L |
| (+) Vcc | 2 | 1 | 2 | 2 | M, B | M, B |
| A | 3 | 2 | 3 | 3 | E | E |
| B | 4 | 4 | 4 | 4 | H | H |
| N | 5 | 3 | 5 | 5 | C | C |
| - | - | - | - | - | - | - |
| A inv. | - | - | - | 6 | - | F |
| B inv. | - | - | - | 7 | - | A |
| N inv. | - | - | - | 8 | - | D |
| n. c. | - | 5 | 6, 7, 8 | - | A, D, F, G, J | G, J |
| Shield | - | - | - | - | - | - |

Connector (M16x0.75) SH, radial, 5-, 6-, 8-, 12-pin



D = 6, L1 = 12, d = 5.3, L2 = 10
 D = 8, L1 = 19, d = 7.5, L2 = 15
 D = 10, L1 = 20, d = 9, L2 = 15
 D = 3/8", L1 = 20, d = 8.3, L2 = 10

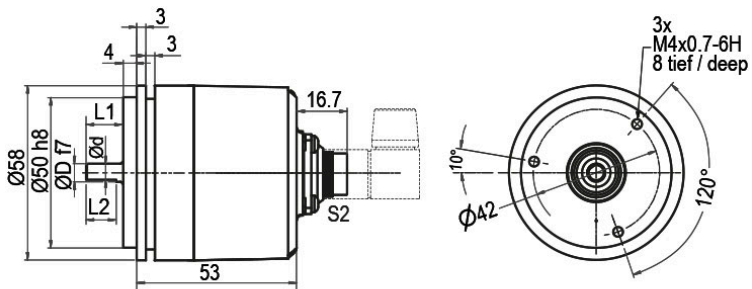
Option AIX:

D = 6, L1 = 10, d = 5.3, L2 = 8

| Description | ABN inv. poss. |
|--|----------------|
| SH5 radial, 5-pin, Connector connected to encoder housing | - |
| SH6 radial, 6-pin, Connector connected to encoder housing | - |
| SH8 radial, 8-pin, Connector connected to encoder housing | • |
| SH12 radial, 12-pin, Connector connected to encoder housing | • |

| Assignments | SH5 | SH6 | SH8 | SH8 | SH12 | SH12 |
|----------------|-------|-------|---------|-------|---------------|--------|
| | 5-pin | 6-pin | 8-pin | 8-pin | 12-pin | 12-pin |
| | | | | | | |
| Circuit | N35 | N35 | N35 | M35 | N35 | M35 |
| GND | 1 | 6 | 1 | 1 | K, L | K, L |
| (+) Vcc | 2 | 1 | 2 | 2 | M, B | M, B |
| A | 3 | 2 | 3 | 3 | E | E |
| B | 4 | 4 | 4 | 4 | H | H |
| N | 5 | 3 | 5 | 5 | C | C |
| - | - | - | - | - | - | - |
| A inv. | - | - | - | 6 | - | F |
| B inv. | - | - | - | 7 | - | A |
| N inv. | - | - | - | 8 | - | D |
| n. c. | - | 5 | 6, 7, 8 | - | A, D, F, G, J | G, J |
| Shield | - | - | - | - | - | - |

Connector (M16x0.75) S2, axial, 7-pin



D = 6, L1 = 12, d = 5.3, L2 = 10
 D = 8, L1 = 19, d = 7.5, L2 = 15
 D = 10, L1 = 20, d = 9, L2 = 15
 D = 3/8", L1 = 20, d = 8.3, L2 = 10

Option AIX:

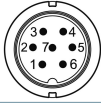
D = 6, L1 = 10, d = 5.3, L2 = 8

Description

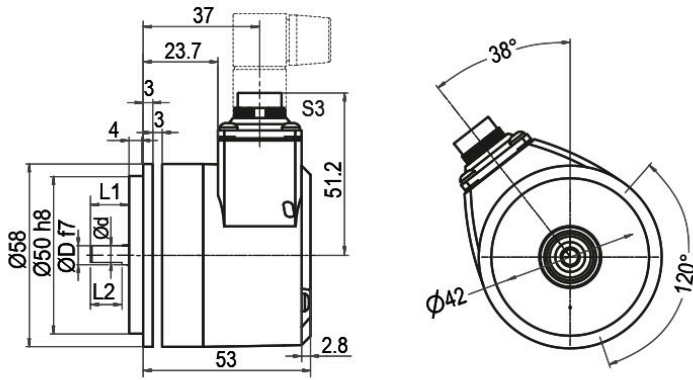
ABN inv. poss.

S2 axial, 7-pin, Connector connected to encoder housing

-

| Assignments | |
|----------------|---|
| | S2 |
| | 7-pin |
| |  |
| Circuit | N35 |
| GND | 1 |
| (+) Vcc | 2 |
| A | 3 |
| B | 4 |
| N | 5 |
| - | - |
| A inv. | - |
| B inv. | - |
| N inv. | - |
| n. c. | 6, 7 |
| Shield | - |

Connector (M16x0.75) S3, radial, 7-pin



D = 6, L1 = 12, d = 5.3, L2 = 10
 D = 8, L1 = 19, d = 7.5, L2 = 15
 D = 10, L1 = 20, d = 9, L2 = 15
 D = 3/8", L1 = 20, d = 8.3, L2 = 10

Option AIX:

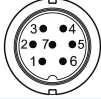
D = 6, L1 = 10, d = 5.3, L2 = 8

Description

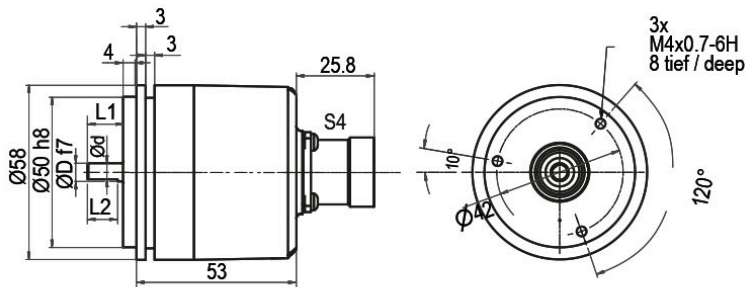
ABN inv. poss.

S3 radial, 7-pin, Connector connected to encoder housing

-

| Assignments | |
|----------------|---|
| | S3 |
| | 7-pin |
| |  |
| Circuit | N35 |
| GND | 1 |
| (+) Vcc | 2 |
| A | 3 |
| B | 4 |
| N | 5 |
| - | - |
| A inv. | - |
| B inv. | - |
| N inv. | - |
| n. c. | 6, 7 |
| Shield | - |

Connector (M23) S4, axial, 12-pin



D = 6, L1 = 12, d = 5.3, L2 = 10
 D = 8, L1 = 19, d = 7.5, L2 = 15
 D = 10, L1 = 20, d = 9, L2 = 15
 D = 3/8", L1 = 20, d = 8.3, L2 = 10

Option AIX:

D = 6, L1 = 10, d = 5.3, L2 = 8

Description

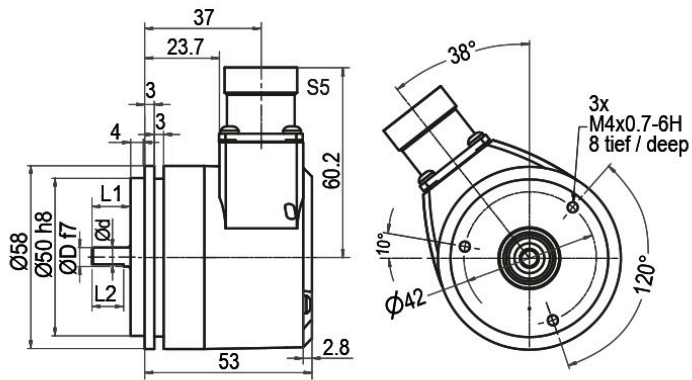
ABN inv. poss.

S4 axial, 12-pin, Connector connected to encoder housing

•

| Assignments | | |
|----------------|----------------------|-------------|
| | S4 | S4 |
| | 12-pin | 12-pin |
| | | |
| Circuit | N35 | M35 |
| GND | 10 | 10 |
| (+) Vcc | 12 | 12 |
| A | 5 | 5 |
| B | 8 | 8 |
| N | 3 | 3 |
| - | - | - |
| A inv. | - | 6 |
| B inv. | - | 1 |
| N inv. | - | 4 |
| n. c. | 1, 2, 4, 6, 7, 9, 11 | 2, 7, 9, 11 |
| Shield | - | - |

Connector (M23) S5, radial, 12-pin



D = 6, L1 = 12, d = 5.3, L2 = 10
 D = 8, L1 = 19, d = 7.5, L2 = 15
 D = 10, L1 = 20, d = 9, L2 = 15
 D = 3/8", L1 = 20, d = 8.3, L2 = 10

Option AIX:

D = 6, L1 = 10, d = 5.3, L2 = 8

Description

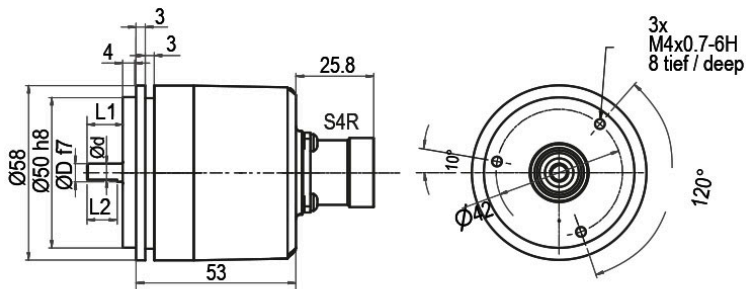
ABN inv. poss.

S5 radial, 12-pin, Connector connected to encoder housing

•

| Assignments | | |
|----------------|----------------------|-------------|
| | S5 | S5 |
| | 12-pin | 12-pin |
| | | |
| Circuit | N35 | M35 |
| GND | 10 | 10 |
| (+) Vcc | 12 | 12 |
| A | 5 | 5 |
| B | 8 | 8 |
| N | 3 | 3 |
| - | - | - |
| A inv. | - | 6 |
| B inv. | - | 1 |
| N inv. | - | 4 |
| n. c. | 1, 2, 4, 6, 7, 9, 11 | 2, 7, 9, 11 |
| Shield | - | - |

Connector (M23) S4R, axial, 12-pin (clockwise)



- D = 6, L1 = 12, d = 5.3, L2 = 10
- D = 8, L1 = 19, d = 7.5, L2 = 15
- D = 10, L1 = 20, d = 9, L2 = 15
- D = 3/8", L1 = 20, d = 8.3, L2 = 10

Option AIX:

- D = 6, L1 = 10, d = 5.3, L2 = 8

Description

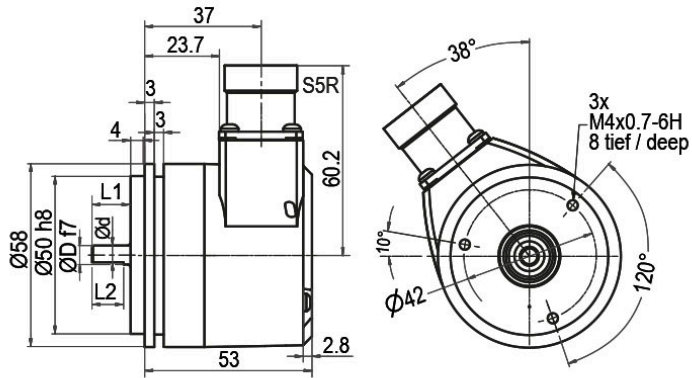
ABN inv. poss.

S4R axial, 12-pin, Connector connected to encoder housing

•

| Assignments | | |
|----------------|----------------------|-------------|
| | S4R | S4R |
| | 12-pin | 12-pin |
| | | |
| Circuit | N35 | M35 |
| GND | 10 | 10 |
| (+) Vcc | 12 | 12 |
| A | 5 | 5 |
| B | 8 | 8 |
| N | 3 | 3 |
| - | - | - |
| A inv. | - | 6 |
| B inv. | - | 1 |
| N inv. | - | 4 |
| n. c. | 1, 2, 4, 6, 7, 9, 11 | 2, 7, 9, 11 |
| Shield | - | - |

Connector (M23) S5R, radial, 12-pin (clockwise)



D = 6, L1 = 12, d = 5.3, L2 = 10
 D = 8, L1 = 19, d = 7.5, L2 = 15
 D = 10, L1 = 20, d = 9, L2 = 15
 D = 3/8", L1 = 20, d = 8.3, L2 = 10

Option AIX:

D = 6, L1 = 10, d = 5.3, L2 = 8

Description

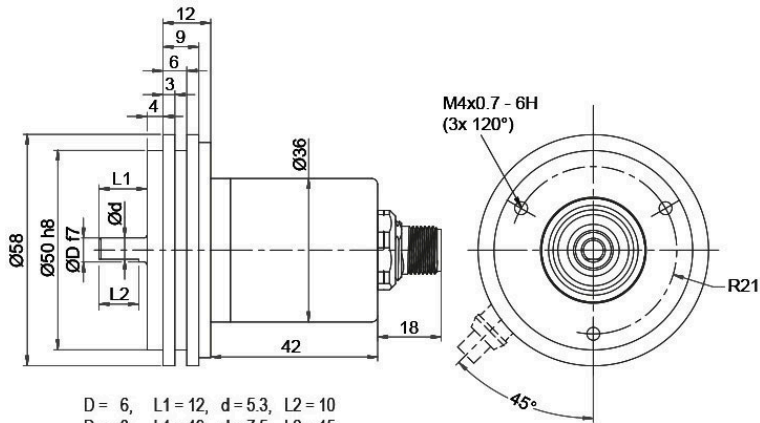
ABN inv. poss.

S5R radial, 12-pin, Connector connected to encoder housing

•

| Assignments | | |
|----------------|----------------------|-------------|
| | S5R | S5R |
| | 12-pin | 12-pin |
| | | |
| Circuit | N35 | M35 |
| GND | 10 | 10 |
| (+) Vcc | 12 | 12 |
| A | 5 | 5 |
| B | 8 | 8 |
| N | 3 | 3 |
| - | - | - |
| A inv. | - | 6 |
| B inv. | - | 1 |
| N inv. | - | 4 |
| n. c. | 1, 2, 4, 6, 7, 9, 11 | 2, 7, 9, 11 |
| Shield | - | - |

Sensor-connector (M12x1) SB, axial, 5-, 8-pin



D = 6, L1 = 12, d = 5.3, L2 = 10
 D = 8, L1 = 19, d = 7.5, L2 = 15
 D = 10, L1 = 20, d = 9, L2 = 15
 D = 3/8", L1 = 20, d = 8.3, L2 = 10

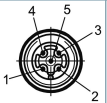
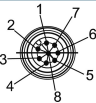
Option AIX:
 D = 6, L1 = 10, d = 5.3, L2 = 8

Alle Abmessungen in mm / All dimensions in mm

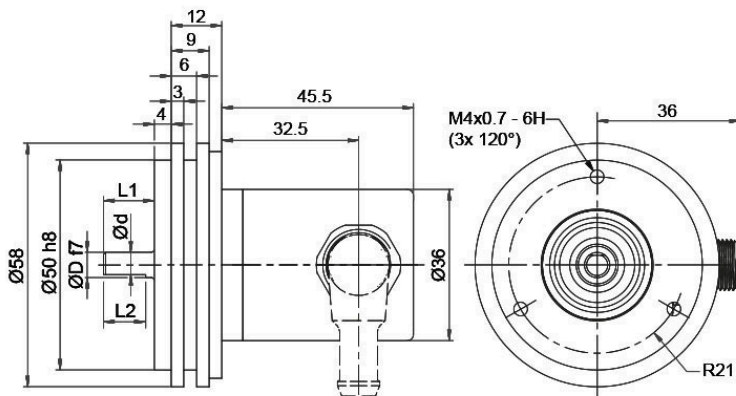
Description

ABN inv. poss.

| | | |
|------------|--|---|
| SB5 | axial, 5-pin, Connector connected to encoder housing | - |
| SB8 | axial, 8-pin, Connector connected to encoder housing | • |

| Assignments | | |
|----------------|---|---|
| | SB5 | SB8 |
| | 5-pin | 8-pin |
| |  |  |
| Circuit | N35 | M35 |
| GND | 3 | 1 |
| (+) Vcc | 1 | 2 |
| A | 4 | 3 |
| B | 2 | 4 |
| N | 5 | 5 |
| - | - | - |
| A inv. | - | 6 |
| B inv. | - | 7 |
| N inv. | - | 8 |
| n. c. | - | - |
| Shield | - | - |

Sensor-connector (M12x1) SC, radial, 5-, 8-pin



D = 6, L1 = 12, d = 5.3, L2 = 10
 D = 8, L1 = 19, d = 7.5, L2 = 15
 D = 10, L1 = 20, d = 9, L2 = 15
 D = 3/8", L1 = 20, d = 8.3, L2 = 10

Option AIX:

D = 6, L1 = 10, d = 5.3, L2 = 8

Alle Abmessungen in mm / All dimensions in mm

Description

ABN inv. poss.

SC5 radial, 5-pin, Connector connected to encoder housing

-

SC8 radial, 8-pin, Connector connected to encoder housing

•

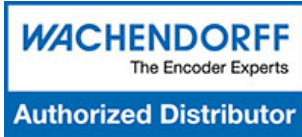
| Assignments | | |
|----------------|-------|-------|
| | SC5 | SC8 |
| | 5-pin | 8-pin |
| | | |
| Circuit | N35 | M35 |
| GND | 3 | 1 |
| (+) Vcc | 1 | 2 |
| A | 4 | 3 |
| B | 2 | 4 |
| N | 5 | 5 |
| - | - | - |
| A inv. | - | 6 |
| B inv. | - | 7 |
| N inv. | - | 8 |
| n. c. | - | - |
| Shield | - | - |

Options

| Options | Order key |
|--|------------------------|
| <p>Low-friction bearings</p> <p>The encoder WDGI 58A is also available as a particularly smooth-running low-friction encoder. The starting torque is thereby changed to 0.25 Ncm [0.354 in-ozf] and the protection class at the shaft input to IP50.</p> | AAC |
| <p>Shafts sealed to IP67, only with 10 mm [0.394"] shaft</p> <p>The encoder WDGI 58A can be supplied in a IP67 version. (full IP67 only connection SB, SC, L2 or L3 version; not cable connection K1 = IP40). Max. RPM: 3500 min⁻¹ Permitted Shaft-Loading: axial 100 N [10.197 kp]; radial 110 N [11.216 kp] Starting-torque: approx. 4 Ncm [5.664 in-ozf] at ambient temperature</p> | AAO |
| <p>Low temperature</p> <p>The encoder WDGI 58A with the output circuit types M35, N35 is also available with the extended temperature range -40 °C up to +85 °C [-40 °F up to +185 °F] (measured at the flange).</p> | ACA |
| <p>Pressure equalising membrane</p> <p>The WDGI 58A shaft encoder is also optionally available with a pressure equalising membrane. This prevents water from penetrating into the encoder housing in the case of high air humidity. The IP67 protection level, temperature range and salt spray resistance are maintained. Resistant to chemicals and solvents in accordance with DIN EN ISO 2812-1.</p> | ACR |
| <p>Shaft length 10 mm [0.394"] (Ø 6 mm [0.236"])</p> <p>The encoder WDGI 58A shaft: Ø 6 mm [0.236"] is also available with a shortened shaft L = 10 mm [0.394"].</p> | AIX |
| <p>Cable length</p> <p>The encoder WDGI 58A can be supplied with more than 2 m cable. The maximum cable length depends on the supply voltage and the frequency; see https://www.wachendorff-automation.com/download-gtd-incremental-encoders/ Please extend the standard order code with a three figure number, specifying the cable length in decimetres. Example: 5 m cable = 050</p> | XXX = Decimeter |

| Example Order No. | Type | | | | | Your encoder |
|--|---|-------------------------|--------------------------------------|-----------------------|------------------|--------------|
| WDGI 58A | WDGI 58A | | | | | WDGI 58A |
| | Shaft | | | | | |
| 06 | 06; 08; 4Z; 10 | | | | | |
| | Pulses per revolution PPR: | | | | | |
| 16384 | 1-16384 Other PPRs on request | | | | | |
| | Channels: | | | | | |
| ABN | ABN | | | | | |
| | Output circuit | | | | | |
| M35 | Resolution PPR | Power supply VDC | Output circuit | - | Order key | |
| | 1-16384 | 4.75 - 30 | HTL (TTL at 5 VDC) | - | N35 | |
| | | 4.75 - 30 | HTL, inv. (TTL/RS422 comp. at 5 VDC) | - | M35 | |
| | Electrical connections | | | | | |
| L2 | Description | | | ABN inv. poss. | Order key | |
| | Cable: length (2 m standard, WDG 58T: 1 m) | | | | | |
| | radial, shield not connected (IP40) | | | • | K1 | |
| | axial, shield connected to encoder housing | | | • | L2 | |
| | radial, shield connected to encoder housing | | | • | L3 | |
| | Connector: (shield connected to encoder housing) | | | | | |
| | connector, M16x0.75, 5-pin, axial | | | - | SI5 | |
| | connector, M16x0.75, 5-pin, radial | | | - | SH5 | |
| | connector, M16x0.75, 6-pin, axial | | | - | SI6 | |
| | connector, M16x0.75, 6-pin, radial | | | - | SH6 | |
| | connector, M16x0.75, 8-pin, axial | | | • | SI8 | |
| | connector, M16x0.75, 8-pin, radial | | | • | SH8 | |
| | connector, M16x0.75, 12-pin, axial | | | • | SI12 | |
| | connector, M16x0.75, 12-pin, radial | | | • | SH12 | |
| | connector, M16x0.75, 7-pin, axial | | | - | S2 | |
| | connector, M16x0.75, 7-pin, radial | | | - | S3 | |
| | connector, M23, 12-pin, axial | | | • | S4 | |
| | connector, M23, 12-pin, radial | | | • | S5 | |
| | connector, clockwise pin count, M23, 12-pin, axial | | | • | S4R | |
| | connector, clockwise pin count, M23, 12-pin, radial | | | • | S5R | |
| sensor-connector, M12x1, 5-pin, axial | | | - | SB5 | | |
| sensor-connector, M12x1, 5-pin, radial | | | - | SC5 | | |
| sensor-connector, M12x1, 8-pin, axial | | | • | SB8 | | |
| sensor-connector, M12x1, 8-pin, radial | | | • | SC8 | | |
| | Options | | | | | |
| | Description | | | Order key | | |
| | Low-friction bearings | | | AAC | | |
| | Shafts sealed to IP67, only with 10 mm [0.394"] shaft | | | AAO | | |
| | Low temperature | | | ACA | | |
| | Pressure equalising membrane | | | ACR | | |
| | Shaft length 10 mm [0.394"] (Ø 6 mm [0.236"]) | | | AIX | | |
| | Without option | | | Empty | | |
| | Cable length | | | XXX = Decimeter | | |

| | | | | | | | | | | | | | | |
|---------------------------|----------|----|-------|-----|-----|----|--|----------|--|--|--|--|--|---------------------|
| Example Order No.= | WDGI 58A | 06 | 16384 | ABN | M35 | L2 | | WDGI 58A | | | | | | Your encoder |
|---------------------------|----------|----|-------|-----|-----|----|--|----------|--|--|--|--|--|---------------------|



For further information please contact our local distributor.
Here you find a list of our distributors worldwide.
<https://www.wachendorff-automation.com/contact-en/wachendorff-world-wide/>

WACHENDORFF

Wachendorff Automation GmbH & Co. KG
Industriestrasse 7 • 65366 Geisenheim
Germany

Phone: +49 67 22 / 99 65 25
E-Mail: wdg@wachendorff.de
www.wachendorff-automation.de

