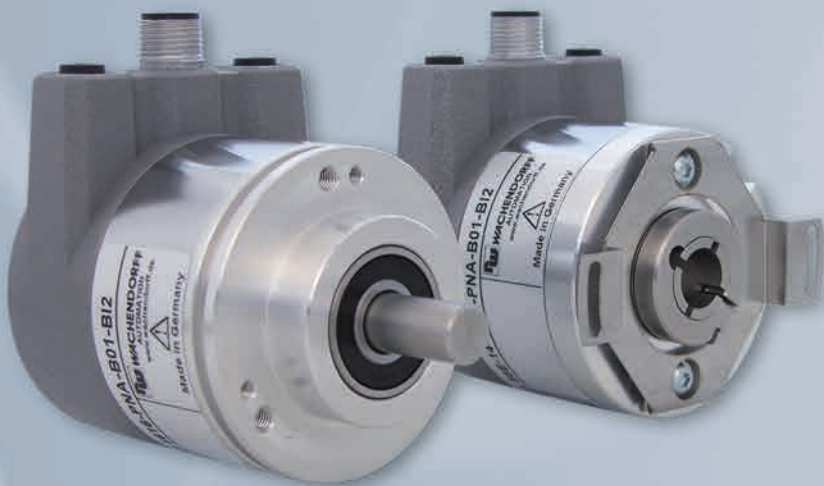


## Universal Industrial Ethernet Absolute Encoder Protocol selection by click

- Protocol selectable via web server
- Solid shaft, end hollow shaft and smallest encoder in the world
- All functions can be used even with the fastest cycle times
- Optimizes storage costs



### Universal-IE

Industrial Ethernet



EtherCAT

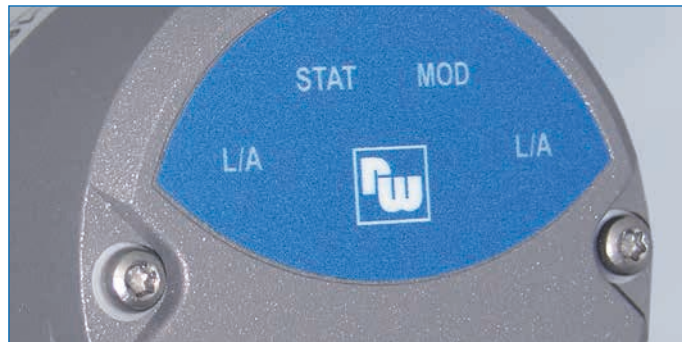
EtherNet/IP



Industrie**ROBUST**

# Universal Industrial Ethernet Absolute Encoder

## Protocol selection by click



### One hardware multiple protocols

Do you use different protocols on your machines? You carry out repairs and don't always know what to expect? With our WDGA universal IE encoder you are completely flexible. You don't have to worry about the correct protocol while placing your order. Through the website provided by our encoder, you have the option of importing the required protocol at any time. Without tools or programming adapters. All you need is a PC with a network card whose IP address you can set yourself and a web browser of your choice. It takes less than 5 minutes to install the protocol.

Extremely high bearing loads guarantee a long service life and a long operating time. In addition to the outstanding mechanical properties, the latest electronic components and the latest communication and encoder profiles are used. These very robust absolute encoders with magnetic sensor allow, due to the new high-precision and highly dynamic technologies, the use in areas in which up to now only absolute encoders with optical principle could be used.

### Multiturn with EnDra<sup>®</sup>-Technology

- up to 43 bit Multiturn
- no battery and no gear

### Single-turn with QuattroMag<sup>®</sup> technology

- Resolution up to 16 bit Single-turn
- Accuracy  $\pm 0.0878^\circ$  ( $\leq 12$  bit)
- Repeat accuracy  $\pm 0.0878^\circ$  ( $\leq 12$  bit)
- Internal dynamic of 50  $\mu$ s

### Available protocols:

Protocol	Device / encoder profile	Cycle time	Functions	Webserver
	V4.2, Class 3, 4	up to 250 $\mu$ s	MRPD, MRP, LLDP, IRT	✓
	Encoder Class C 3 CoE (CiA 406), EoE, FoE	up to 50 $\mu$ s	DC, SM3, SYNC0	✓
	EtherNet/IP™, Conformance getested nach Version CT-18, Specification Vol 2, Ed 1.29, CIP Specification Vol 1, Ed 3.31	up to 1 ms	Position Sensor, DLR, Qos, ACD, Multi-und Unicast	✓

### Technical Data:

**Types:** clamping flange / synchro flange / hollow shaft (blind-bored)

### Power supply/Current consumption:

10 VDC up to 32 VDC; typ. 125 mA

**Power consumption:** typ. 3 W

**Operating temperature:** -40 °C up to +85 °C, -40 °F up to +176 °F

### Sensor data:

Single-turn: patented QuattroMag<sup>®</sup> technology

Single-turn resolution: up to 65,536 steps/360° (16 bit)

Single-turn accuracy:  $\pm 0.0878^\circ$  ( $\leq 12$  bit)

Single-turn repeat accuracy:  $\pm 0.0878^\circ$  ( $\leq 12$  bit)

Internal cycle time: 50  $\mu$ s

Multi-turn: patented EnDra<sup>®</sup> technology no battery and no gear.

Multi-turn resolution: up to 43 bit

### Your advantages at a glance:

- Optimizing storage capacities
- Reduce total cost of ownership
- Flexible with spare parts
- Smallest design
- Future-proof thanks to high internal dynamics and update function via web server

**Any Questions?** Just call us at +49 (0) 6722/9965-414, send us an E-Mail to [support-wdga@wachendorff.de](mailto:support-wdga@wachendorff.de) or call your local distributor: [www.wachendorff-automation.com/distri](http://www.wachendorff-automation.com/distri)



Wachendorff Automation GmbH & Co. KG  
Industriestrasse 7 • D-65366 Geisenheim

Tel.: +49 (0) 67 22 / 99 65 - 25

Fax: +49 (0) 67 22 / 99 65 - 70

E-Mail: [wdg@wachendorff.de](mailto:wdg@wachendorff.de)

[www.wachendorff-automation.com](http://www.wachendorff-automation.com)



2022

Your distributor: