

# WACHENDORFF

The Encoder Experts

## Precise positioning with the LMS MA

DEVELOPED AND  
MADE IN GERMANY  
5 YEARS WARRANTY

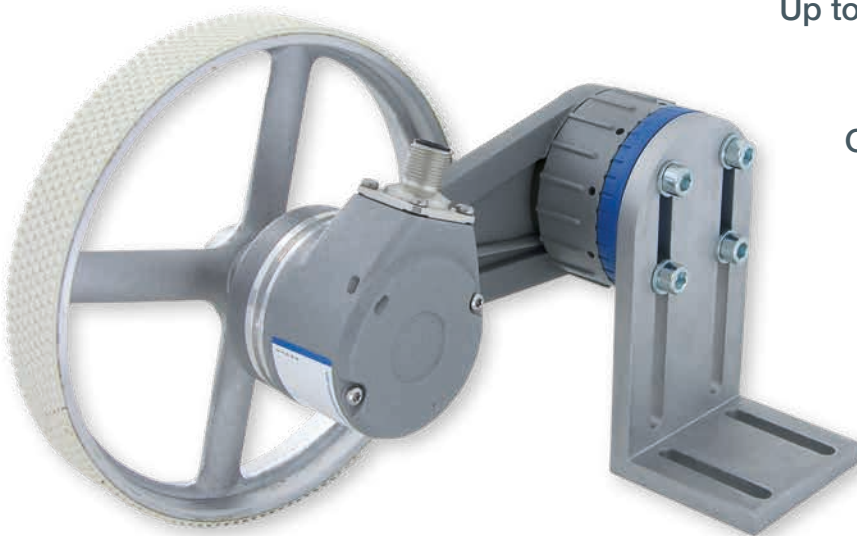
[wachendorff-automation.com/lmsma](http://wachendorff-automation.com/lmsma)

Space-saving and reliable complete system  
for position, speed and length

Up to 0.008 mm/pulse for excellent  
measurement results

Suitable for any surface

Quickly mounted and adjusted



**Industrie ROBUST**



## Positions, speeds, travel lengths ... measure reliably and precisely

For over 25 years, Wachendorff Automation has developed and manufactured systems and rotary encoders for worldwide use in the areas of mechanical and plant construction, lift construction, mobile machinery and renewable energies.

More than 1,500 realised customer variants demonstrate our flexibility and absolute focus on the customer's needs. Owing to the high mechanical and electrical stability of our rotary encoders and systems, we provide a five-year warranty – which is unique in the world!

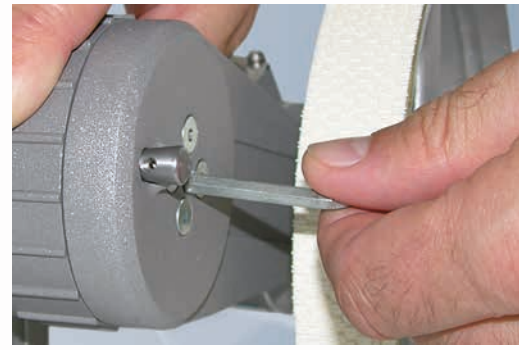
We support you right from the construction phase. Our strength lies in precisely matched lengths and position measuring systems for your measurement task.

With these systems, the positions, speeds and travel lengths of conveyor belts, film/paper webs or cardboard packaging, for example, can be recorded safely and efficiently.

We meet the highest requirements in an ideal way with the LMSMA2x/3x measuring systems:

- Constant and accurate measurement results through optimal, low-slip measurement in the most varied conditions arising from:
  - Adjustable pressure
  - Coordinated measuring wheels for every surface
  - Selectable resolutions from 1.0 to 0.008 mm/pulse.
- Small space requirement thanks to its compact design.
- Long service lifetimes thanks to the high mechanical robustness of all the components.
- Fast and flexible mounting on the machine.





## Experience is in the detail ... save time with a system

We have significantly optimised the adjustment possibilities of the whole system, which is based on a spring arm with a central spring. This gives you constructive and valuable benefits:

### Now 36 alignment positions

The newly developed hand wheel with its 10° resolution levels allows for 36 alignment positions. In combination with the elongated holes of the angle bracket, you get much more room for the installation.

### Easily adjustable preload

With the new systems, the spring preload is adjustable in steps from 5 N to a maximum of 30 N preload.

### Calibration without disassembly

The preassembled systems for installation in the machine or readjustment during commissioning remain mounted.

### Fixation in resting position

During machine setup or maintenance in particular, it is possible that the length measuring system is not designed to run. The LMSMA systems offer the possibility to fix the spring arm in a resting position. The spring arm is then returned to the working position and continues to work at the previously set pressure.

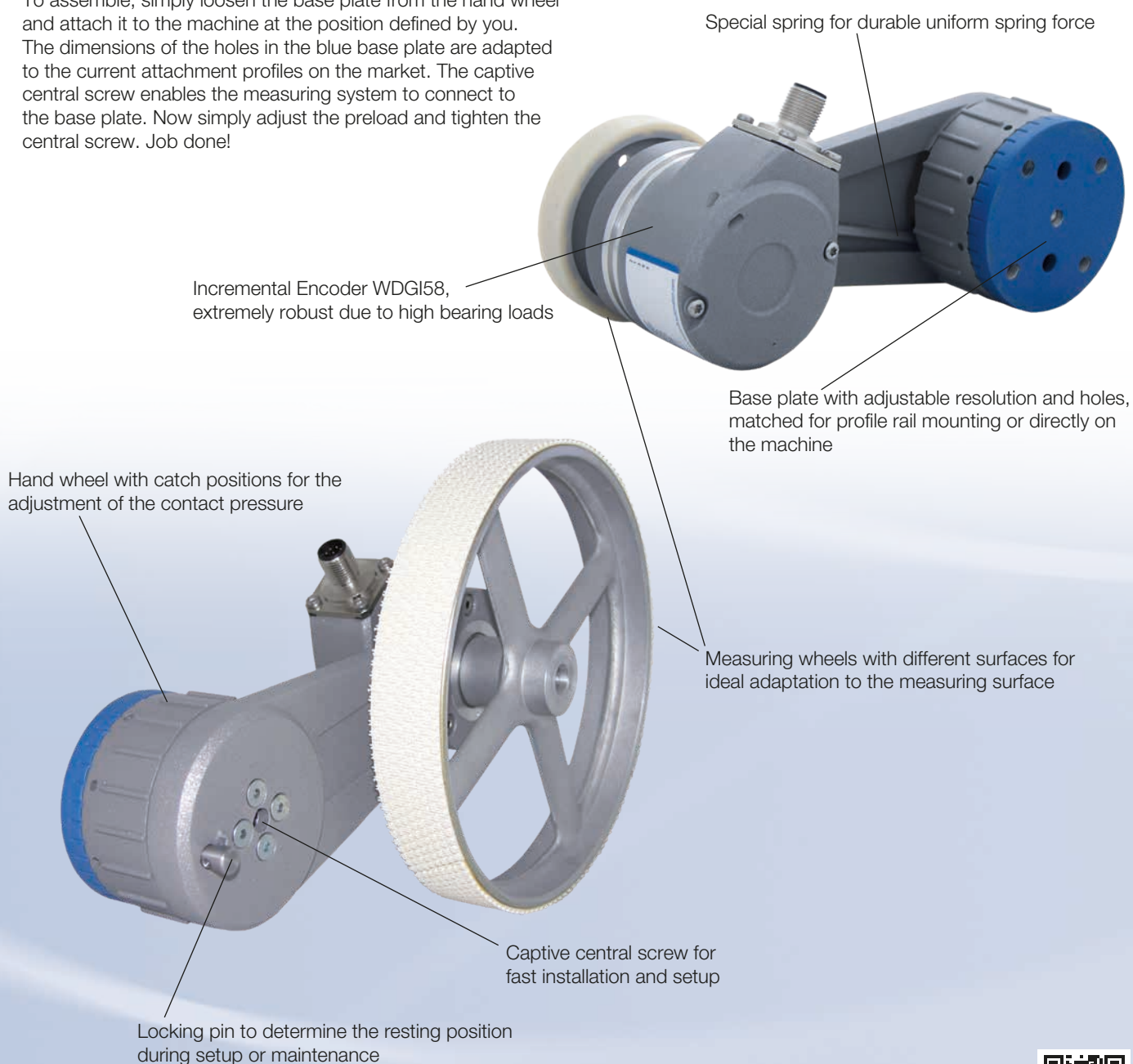
You will see that there are a number of good reasons for using the LMSMA length measuring systems.





## Quickly mounted – directly on the machine ... the LMSMA2x length measuring system

To assemble, simply loosen the base plate from the hand wheel and attach it to the machine at the position defined by you. The dimensions of the holes in the blue base plate are adapted to the current attachment profiles on the market. The captive central screw enables the measuring system to connect to the base plate. Now simply adjust the preload and tighten the central screw. Job done!




LMSMA22 length measuring system (measuring wheel U = 200 mm / without angle bracket)

[illegible]

[www.wachendorff-automation.com/lmsma22](http://www.wachendorff-automation.com/lmsma22)

LMSMA25 length measuring system (measuring wheel U = 500 mm / without angle bracket)



		<b>LMSMA251000 24KH10</b>						<b>LMSMA250100 24KH10</b>						<b>LMSMA250040 05KH10</b>						<b>LMSMA250020 24KH10</b>					
		<b>LMSMA251000 05KH10</b>						<b>LMSMA250100 05KH10</b>						<b>LMSMA250040 05KH10</b>						<b>LMSMA250020 05KH10</b>					
		<b>LMSMA251000 24KG10</b>						<b>LMSMA250100 24KG10</b>						<b>LMSMA250040 24KG10</b>						<b>LMSMA250020 24KG10</b>					
		<b>LMSMA251000 05KG10</b>						<b>LMSMA250100 05KG10</b>						<b>LMSMA250040 05KG10</b>						<b>LMSMA250020 05KG10</b>					
		<b>LMSMA251000 24NG10</b>						<b>LMSMA250100 24NG10</b>						<b>LMSMA250040 24NG10</b>						<b>LMSMA250020 24NG10</b>					
		<b>LMSMA250100 05NG10</b>						<b>LMSMA250040 05NG10</b>						<b>LMSMA250020 05NG10</b>											
mm/pulses	Pulses																								
1,0	500	•	•	•	•	•	•																		
0.1	5000							•	•	•	•	•	•												
0.04	12500													•	•	•	•	•	•						
0.02	25000																			•	•	•	•	•	•
VDC																									
10 up to 30 HTL		•		•		•	•		•		•	•	•	•		•		•	•	•		•		•	•
4.75 uo to 5.5 TTL			•		•		•		•		•	•	•		•		•	•	•		•		•		•
Range of appl.*		1	1	2	2	3	3	1	1	2	2	3	3	1	1	2	2	3	3	1	1	2	2	3	3

[www.wachendorff-automation.com/lmsma25](http://www.wachendorff-automation.com/lmsma25)

Range of application of the measuring wheels U = 200 mm / 500 mm

	*1	*2	*3
<b>Measuring wheel</b>			
<b>Systems</b>	LMSxxxKH	LMSxxxKG	LMSxxxNG
<b>Range of appl.</b>	Plastic, painted surfaces, paper, paste-board, wood, metal, textiles.	Plastic, painted surfaces, paper, paste-board, wood, metal, textiles.	Textiles.

Does your application require other resolutions or pulse counts, measuring wheels, cable lengths or other accessories? Contact us. We are happy to help you find the optimal solution.

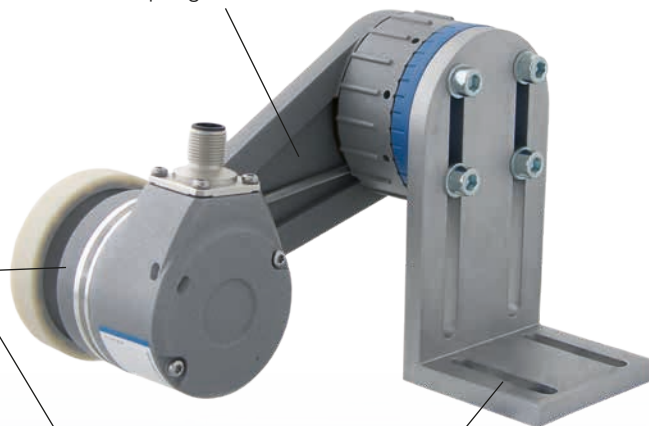


## Easily mountable – with pre-assembled angle ... the LMSMA3x length measuring system

If direct mounting is not possible at the plant, we have a solution for it. Varied mounting positions are possible with the highly variable orientable angle bracket and the 36 locking positions of the hand wheel.

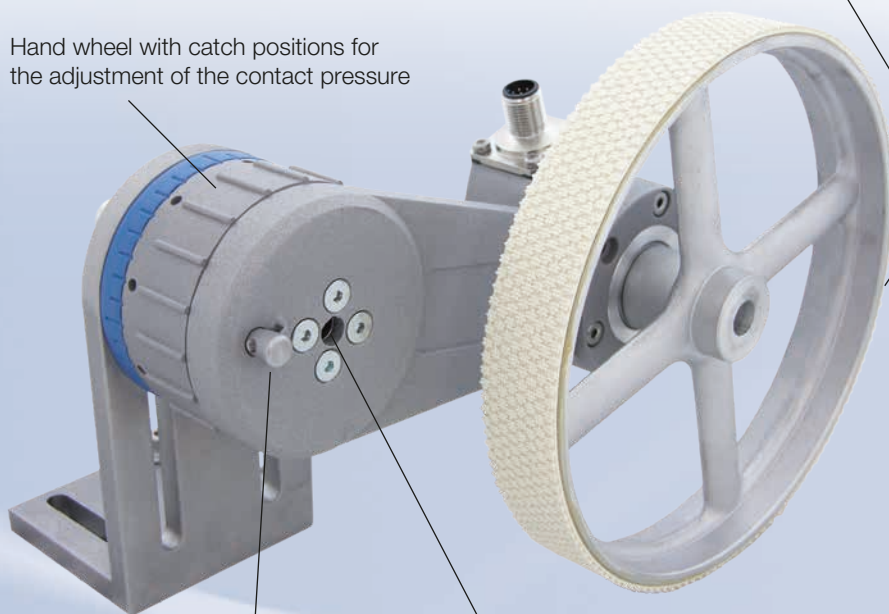
Special spring for durable uniform spring force

Incremental Encoder WDG158, extremely robust due to high bearing loads



Angle bracket with elongated holes for any installation on the plant, pre-assembled at the pivot point of the measuring system

Hand wheel with catch positions for the adjustment of the contact pressure



Measuring wheels with different surfaces for ideal adaptation to the measuring surface

Locking pin to determine the resting position during setup or maintenance

Captive central screw for fast installation and setup



## LMSMA32 length measuring system (measuring wheel U = 200 mm / with angle bracket)



		LMSMA321000 24KH10						LMSMA321000 05KH10						LMSMA321000 24KG10						LMSMA321000 05KG10						LMSMA320100 24NG10						LMSMA320100 05NG10						LMSMA320100 24KH10						LMSMA320100 05KH10						LMSMA320100 24KG10						LMSMA320100 05KG10						LMSMA320040 24NG10						LMSMA320040 05NG10						LMSMA320040 24KH10						LMSMA320040 05KH10						LMSMA320040 24KG10						LMSMA320040 05KG10						LMSMA320008 24NG10						LMSMA320008 05NG10						LMSMA320008 24KH10						LMSMA320008 05KH10						LMSMA320008 24KG10						LMSMA320008 05KG10																																																																																																																																																																																																																																																																																																																																																																																																																																																																																																																																																																																																																																																																																																																																																																																																																																																																																																																																																																																																																																																																																																																																																																																																									
mm/pulses	Pulses																																																																																																																																																																																																																																																																																																																																																																																																																																																																																																																																																																																																																																																																																																																																																																																																																																																																																																																																																																																																																																																																																																																																																																																																																																																																																																																																								

[www.wachendorff-automation.com/lmsma32](http://www.wachendorff-automation.com/lmsma32)

## LMSMA35 length measuring system (measuring wheel U = 500 mm / with angle bracket)



		LMSMA351000 24KH10						LMSMA350100 05KH10						LMSMA350040 05KH10						LMSMA350020 05KH10					
mm/pulses	Pulses																								
1.0	500	•	•	•	•	•	•																		
0.1	5000							•	•	•	•	•	•												
0.04	12500													•	•	•	•	•	•						
0.02	25000																			•	•	•	•	•	•
VDC																									
10 up to 30 HTL		•		•		•		•		•		•		•		•		•		•		•		•	
4.75 up to 5.5 TTL			•		•		•		•		•		•		•		•		•		•		•		•
Range of appl.*		1	1	2	2	3	3	1	1	2	2	3	3	1	1	2	2	3	3	1	1	2	2	3	3

[www.wachendorff-automation.com/lmsma35](http://www.wachendorff-automation.com/lmsma35)

## Range of application of the measuring wheels U = 200 mm / 500 mm

	*1	*2	*3
Measuring wheel			
System	LMSxxxKH	LMSxxxKG	LMSxxxNG
Range of appl.	Cardboard, wood, soft plastics, textiles, leather, paper, wire, steel sections, greased metals and painted surfaces.	Cardboard, wood, soft plastics, textiles, rubber.	Cardboard, wood, plastics, coarse textiles, carpet, cable measurement, fleece, paper.

Does your application require other resolutions or pulse counts, measuring wheels, cable lengths or other accessories?  
Contact us. We are happy to help you find the optimal solution.

# automation.com

www.wachendorff-



## The Wachendorff Group

- Delighted customers
- Corporate responsibility
- Attractive for good employees
- Outstanding quality
- Technology leader
- Environmental protection
- Profitable growth

We are a medium-sized owner-managed corporate group based in the beautiful Rheingau district, situated to the west of Wiesbaden.

Competent, personal, face-to-face advice and long-term collaboration with our business partners are the cornerstones of our continual growth. We are certified according to DIN ISO 9001:2015.

### Wachendorff Automation GmbH & Co. KG

The development and manufacturing of rotary encoders, engine feedback devices and complete measuring systems for use in a wide range of serial production applications in mechanical and plant engineering. An extensive standard range featuring numerous options and efficient development of customised solutions.

### Wachendorff Prozesstechnik GmbH & Co. KG

A reliable supplier since 1978 of robust, high quality industrial devices for visualizing, communicating and processing data in the areas of mechanical, plant and building automation.

### VISUALYS GmbH

VISUALYS focuses on the development, integration and consulting of software around the topics of Industry 4.0, SmartData and IIoT for machine and plant manufacturers and operators. The core competence lies in data VISUalisation and data anALYSis.

## WACHENDORFF

The Encoder Experts

Wachendorff Automation GmbH & Co. KG  
Industriestrasse 7 • D-65366 Geisenheim

Tel.: +49 (0) 67 22 / 99 65 - 25  
E-Mail: [wdg@wachendorff.de](mailto:wdg@wachendorff.de)  
[www.wachendorff-automation.com](http://www.wachendorff-automation.com)



2024

Your distributor: