

Installation Kit for frequency-control lifts WDGAS58E with end hollow shaft encoder



- Easy installation on all motor shafts
- Flexible attachment possibilities
- Space-saving
- TTL, HTL output
- Threads: M8, M10, M12, M16 und M20

www.wachendorff-automation.com/wdgas58e

The following installation kits are available for fitting the encoder to a frequency controlled lift. Every installation kit consists:
 1 x Encoder, 1 x with 15 m ready-made shielded cable, 1 x shaft adapter

Mechanical Data

Housing
 - Synchro flange: Aluminium
 - Cap: Aluminium, powder coated
 - Torque Support:
 1. Spring plate Incl. 1 spring plate WDGDS10001
 Compensation: axial: ±0.8 mm
 radial: ±0.2 mm
 Max. operating speed: 6000 rpm

Hollow bore (blind)

- Material: stainless steel
 - Diameter: 10
 - Permitted load on shaft end: max. 80 N radial
 max. 60 N axial
 - Starting torque: approx. 1.6 Ncm at ambient temperature
 Attachment: permanently attached clamping ring

Bearings

- Type: 2 precision ball bearings
 - Service life: 1x 10⁹ U revs. at 100 % shaft load
 1x 10¹⁰ U revs. at 40 % shaft load
 1x 10¹¹ U revs. at 20 % shaft load

Weight:

approx. 220 g

Connections:

SH8: radial connector, 8 pin

Protection rating:

IP65

(EN 60529)

Operating temperature: -20 °C up to +80 °C

Storage temperature: -30 °C up to +80 °C

Machinery Directive:

basic data safety integrity level

MTTF_d: 200 a

Mission time (T_M): 25 a

Nominal service life 1x 10¹¹ revs. at 6000 rpm and

(L_{10h}): 20 % rated shaft load

Diagnostic coverage (DC): 0 %

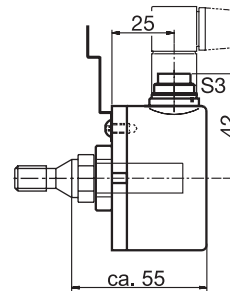
Encoder-Order No.:

WDG58E-YYYY-ABN-H24-SH8
 - YYYY: with 1024, 2048, 4096 PPR
 - 3 channels, A, B and zero marker pulse N
 - H24: 10 VDC up to 30 VDC HTL
 Power supply
 - SH8: radial connector, 8 pin

 WDG58E-YYYY-ABN-R05-SH8
 - YYYY: with 1024, 2048, 4096 PPR
 - 6 channels, A, B, zero marker pulse N + Inv.
 - 5 VDC TTL Power supply with inv. output
 - SH8: radial connector, 8 pin

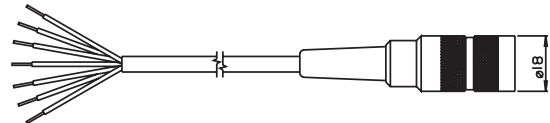
YYYY: Please specify required. PPR: 1024, 2048 oder 4096

Installation Kit WDGAS58E:



Cable:

The cable is 15m in length and is shielded, however the shield is not connected to the connector housing. With a mated connector, the encoder meets protection class IP40.

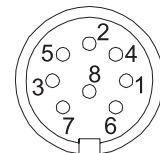


The cable has a connection as follows:

Function	Colour
Positive	brown
Negative	white
A	green
A inv.	red
B	yellow
B inv.	black
N	gray
N inv.	violet
Shield:	cable braiding
Order No.:	KD84015

Pin identification SH8

Function	Pin HTL	PIN TTL
Positive	2	2
Negative	1	1
A	3	3
A inv.	-	6
B	4	4
B inv.	-	7
N	5	5
N inv.	-	8



The view of the soldered side of the connector connector corresponds to the view of the pin arrangement on the encoder.

Shaft adapters



Shaft adapters:

The shaft adapters are screwed into an appropriate thread on the lift.

Note:

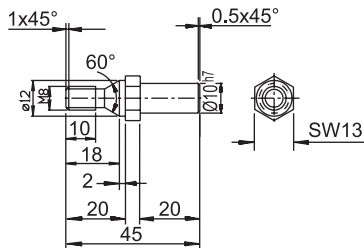
XX: Please insert the code corresponding to the required shaft adapter:

Shaft adapter 10/M8:	08
Shaft adapter 10/M10:	10
Shaft adapter 10/M12:	12
Shaft adapter 10/M16:	16
Shaft adapter 10/M20:	20

YYYY: Please specify required PPR: 1024, 2048 or 4096

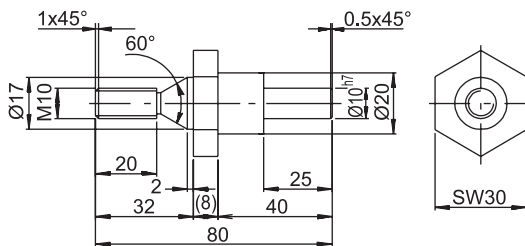
Ordering information WDGAS58E:

Description:	Order No.:
Installation Kit 10-30 VDC HTL comprising: - WDG58E-YYYY-ABN-H24-SH8 - YYYY: with 1024, 2048, 4096 PPR - 3 channels, A, B, N - H24: 10 - 30 VDC power supply - SH8: radial connector, 8 pin - KD84015: 15 m ready-made shielded cable - XX: Shaft adapter: 08, 10, 12, 16 or 20	WDGAS58EYYYYH24XX
Installation Kit 5 VDC TTL, RS422 comprising: - WDG58E-YYYY-ABN-R05-SH8 - YYYY: with 1024, 2048, 4096 PPR - 6 channels, A, B, N, A, B, N - R05: 5 VDC TTL power supply with inv. output circuit - SH8: radial connector, 8 pin - KD84015: 15 m ready-made shielded cable - XX: Shaft adapter: 08, 10, 12, 16 or 20	WDGAS58EYYYYR05XX



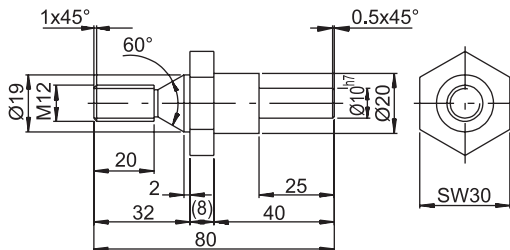
Shaft adapter M8

Order No.: WDGWA10M08



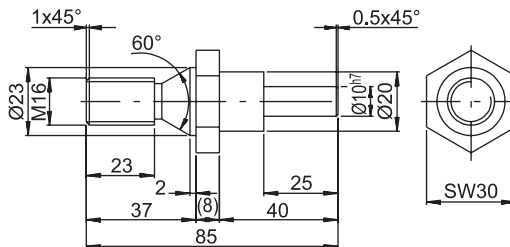
Shaft adapter M10

Order No.: WDGWA10M10



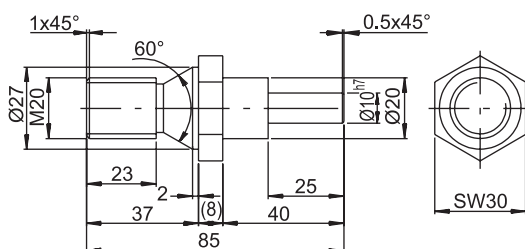
Shaft adapter M12

Order No.: WDGWA10M12



Shaft adapter M16

Order No.: WDGWA10M16



Shaft adapter M20

Order No.: WDGWA10M20