

Encoder WDG 53V



**Suitable for use within
the food industry**

- Extremely rugged and economical encoder with short measurements
- Easy screw mounting
- Protection to IP68 all around
- Optional: -40 °C up to +80 °C

www.wachendorff-automation.com/wdg53v

Available PPR up to 1500 PPR

Mechanical Data

- Screw flange: stainless steel V4A, incl. nut M20 x 1.5
- Cap: stainless steel V4A, permissible for use with food stuff, grommet, stainless steel V2A

- Shaft \varnothing 6 mm
- Material: stainless steel V4A
 - Permitted load on shaft end: max. 30 N radial, max. 45 N axial
 - Starting torque: approx. 1.2 Ncm at ambient temperature

- Bearings
- Type: 2 precision ball bearings
 - Service life: 1 x 10⁹ revs. at 100 % rated shaft load, 1 x 10¹⁰ revs. at 40 % rated shaft load, 1 x 10¹¹ revs. at 20 % rated shaft load

- Max. operating speed: 6000 rpm
Weight: approx. 470 g
Connections: cable
Starting torque Nut: max. 10 Nm

Protection rating: IP68 (EN 60529)

- Operating temperature: -20 °C up to +80 °C
Storage temperature: -30 °C up to +80 °C

Machinery Directive: basic data safety integrity level

- MTTF_d: 200 a
Mission time (T_M): 25 a
Nominale service life (L_{10h}): 1 x 10¹¹ revs. at 6000 rpm and 20 % rated shaft load
Diagnostic coverage (DC): 0 %

Electrical Data

- Power supply/ Open circuit current consumption: 4.75 VDC up to 5.5 VDC: max. 70 mA, 10 VDC up to 30 VDC: max. 70 mA

Output circuit: TTL, RS422 compatible HTL

Pulse frequency: TTL up to 1500 PPR: max. 200 kHz, HTL up to 1500 PPR: max. 200 kHz

Channels: AB, ABN and inverted signals

Load: max. 40 mA/channel

Circuit protection: circuit type H24 and R24 only

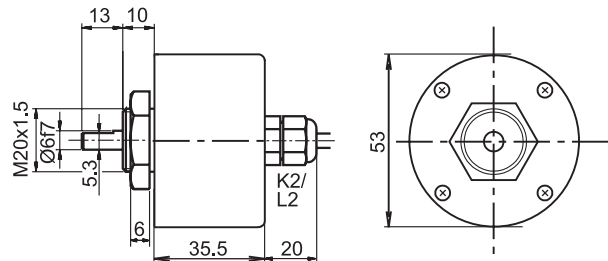
Accuracy: Phase offset: 90° ± max. 7.5 % of the pulse length, pulse-/pause-ratio: 50 % ± max. 7 %

Further technical information on:

www.wachendorff-automation.com/gtd

Matching accessories on: www.wachendorff-automation.com/acs

Cable connection K2, L2 with 2 m cable



Options:

Low-temperature:

The encoder WDG 53V with the output switch 10 VDC up to 30 VDC is also available with the extended temperature range -40 °C up to +80 °C (measured at the flange). When ordering please add the suffix code - ACA.

Cable length:

The encoder WDG 53V can be supplied with more than 2 m cable. The maximum cable length depends on the supply voltage and the frequency; see "General Technical Data":

www.wachendorff-automation.com/gtd

Please extend the standard order code with a three figure number, specifying the cable length in decimetres.

Example: 3 m cable = 030

Ordering information:

Please see our general technical data at: www.wachendorff-automation.com/gtd

Output circuit:				
Resolution PPR	Power supply VDC	Output circuit	Light reserve warning	Order Key
up to 2500	4.75 - 5.5	TTL	-	H05
		TTL, RS422 comp., inverted	-	R05
	10 - 30	HTL	-	H24
		HTL inverted	-	R24

Channels: AB, ABN

Pulses per revolution PPR:
 4, 9, 10, 15, 20, 25, 28, 30, 40, 50, 60, 90, 100, 120, 125, 128, 150, 160, 180, 200, 235, 250, 300, 314, 318, 360, 400, 500, 600, 625, 635, 720, 900, 1000, 1024, 1080, 1200, 1250, 1500.
 Other PPRs on request

Electrical connections:			
Order key	Outgoing	Description	ABN inv.
Cable: (Length 2 m standard)			
K2	axial	shield not connected	•
L2		shield connected to encoder housing	•

Options:
 Empty = Without option
 ACA = Low-temperature -40 °C up to +80 °C
 In decimetres = Cable length

Order No.:

Example	WDG 53V	1500	ABN	H24	K2	
Your encoder	WDG 53V					